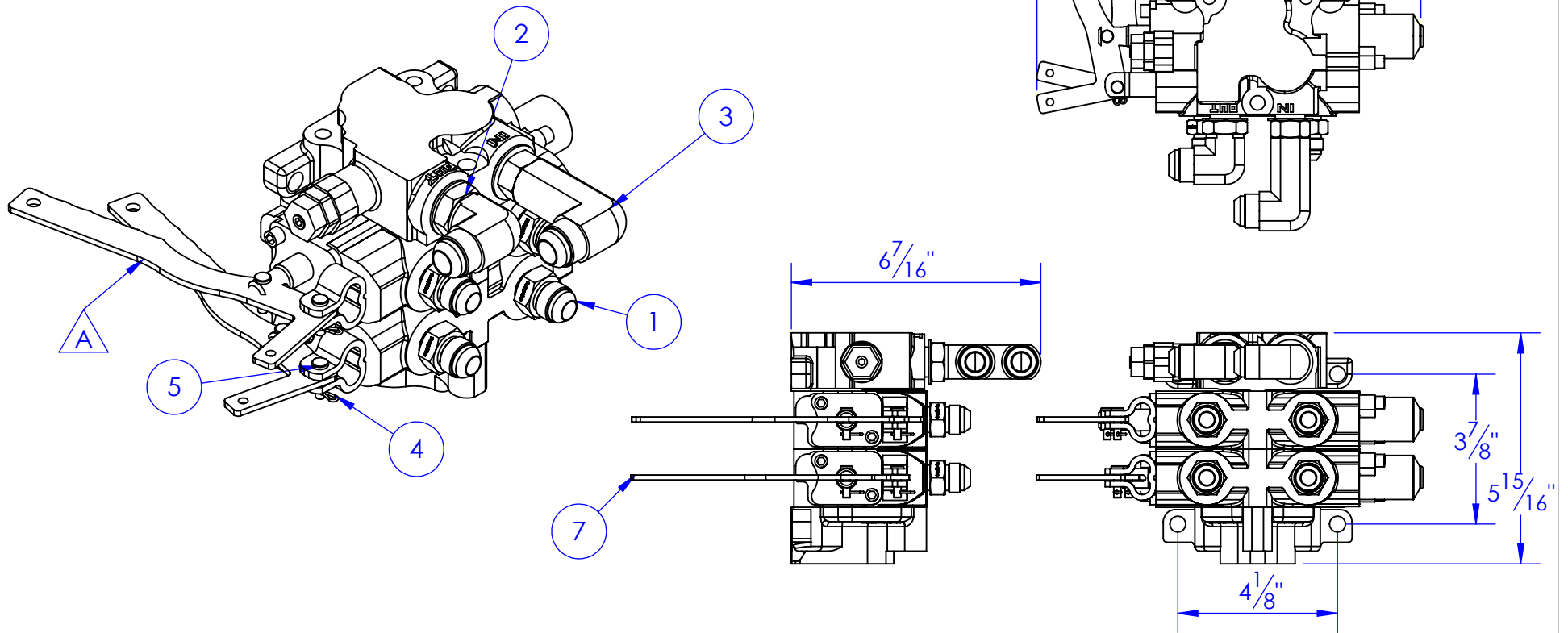


ITEM NO.	PART NUMBER	DESCRIPTION	DRAWING #	QTY.
1	AD-6400 8-8	8MJ x 8MB	PURCHASED	4
2	AD-6801 10-10	10 MJ x 10MB 90		1
3	AD-6801 LL 10-10	10MJ x10MB 90 LONG		1
4	HD-BP .0469x.5938	BRIDGE PIN, 19/32	STOCK	4
5	HD-PC 3/16x3/4 SS	CLEVIS PIN 3/16x3/4	STOCK	4
6	VA-5000-2-2500	2-SPOOL VALVE	PURCHASED	1
7	VA-ACT-BAR HANDLE	HUSCO DUAL ACTUATOR BAR HANDLE	10-2901	2

REVISIONS			
REV.	DESCRIPTION	DATE	APPROVED
A	REPLACED VA-5000 BAR HANDLE WITH VA-ACT-BAR HANDLE	3/28/2014	



**PROPRIETARY AND CONFIDENTIAL**  
THE INFORMATION CONTAINED IN THIS  
DRAWING IS THE SOLE PROPERTY OF TRIPLE  
C INC. ANY REPRODUCTION IN PART OR  
AS A WHOLE WITHOUT THE WRITTEN  
PERMISSION OF TRIPLE C INC. IS PROHIBITED.

DIMENSIONS ARE IN INCHES  
TOLERANCES:  
FRACTIONAL  $\pm 1/16$   
ANGULAR: MACH  $\pm 1$  BEND  $\pm$   
TWO PLACE DECIMAL  $\pm 010$   
THREE PLACE DECIMAL  $\pm 005$

MATERIAL ---  
DO NOT SCALE DRAWING

NAME	DATE
DRAWN HEATH	3/28/2014
PART #	
ASM #	VA-5000-2-COMP
COMMENTS:	

HUSCO, 2  
SPOOL  
VALVE ASSY

P.O. BOX 248,  
SABETHA, KS 66534

**TRIPLE C**  
INC.

SIZE A	DWG. NO. 10-0973-02	REV. A
SCALE: 1:4	WEIGHT: 18.2	SHEET 1 OF 1